

Hokkaido Drive Package A *6 nights*

OP=Option ☆NO Admission Fee ★Needs Admission O=Meals

	Located	Time	Traffic	Itinerary	BF	LN	DN
Day1	Chitose Airport	50 km 40 min	Drive	Upon Arrival at chitose Airport After arrival, Please stop at tour counter on the domestic arrival floor by yourself to pick up car rental & accommodation Voucher. Show your voucher to the staff at TOYOTA RENT A CAR Counter. Then Take you to the TOYOTA Populat branch New Chitose Airport office by free Shuttle ★Ainu museum ☆Hell Valley	-	-	H
	shiraoi Noboribetsu	56 km 50 min					
	Toya						

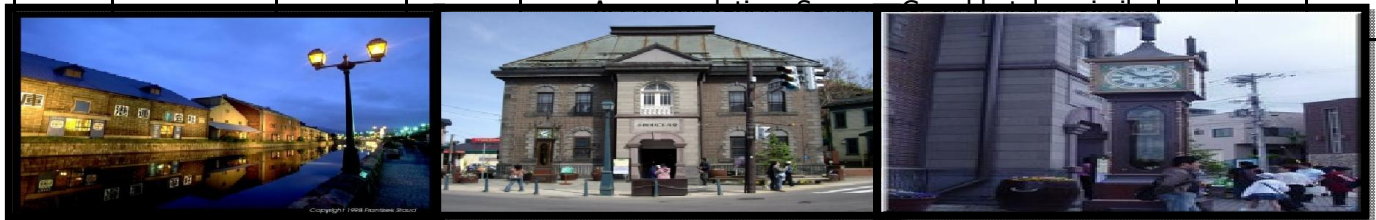


Day2	Lake Toya Area	140 km 120 min	Drive	After Breakfast, ☆Mt. Showa & ★Mt. Usu Ropeway ★Bear Park Drive to Hskodate ☆Lake Onuma National Park	H	-	-
	Onuma Hakodate	33 km 40 min					



Day3	Niseko Yoichi Shakotan Otaru	64 km 49 km 69 km	Drive	After Breakfast, ☆Hokodate Morning maket ☆Goryokaku ★Goryokaku Tower ☆Motomachi Area Free walk Drive to Niseko ☆Free walk niseko Accommodation: Grand Park Otaru or	H	-	-

	Located	Time	Traffic	Itinerary	BF	LN	DN
Day4	Niseko Yoichi Shakotan Otaru	64 km 49 km 69 km	Drive	After Breakfast, Drive to Yoichi ☆Nikka Whisky Brewery Factory ☆Shakotan, Cape Kamui Then drive to Otaru Accommodation: Grand Park Otaru or similar	H	-	-
Day5	Otaru sapporo	39 km 60 min	Drive	After Breakfast, ☆Otaru canal, Music Box Museum clock Drive to sapporo ★Shiroi koibito Park ☆HokkaidobShrine ★Mt. Moiwa Ropeway - Night view or ★JR Tower Observation ☆Susukino	H	-	-



Day6	Sapporo chitose	40 km 50 min	Drive	After Breakfast, ☆Odori Park ★Sapporo Dome ★Hitsujigaoka observation Hi II Then Drive to chitose Return a car at Toyota New Chitose Airport office Then take a taxi to Hotel by yourself Accommodation: ANA Crowe plaza Chitose or similar	H	-	-
------	--------------------	-----------------	-------	---	---	---	---

**Day 7 then can take a free shuttle bus from ANA Crown Plaza Chitose to the New Chitose Airport.

Arr Date	2pex (TWN x1)	4pex (TWN x 2)
Car Class	A	WA
Car Type	Sedan	Station Wagon
Apr/May	24,600 Baht	24,600 Baht
Except 26Apr-6May		
01Jul-18Jul & 18-31Aug	31,200 Baht	31,200 Baht
19 Jul-17 AUG	36,600 Baht	36,600 Baht
Except 9Aug-16 Aug		



ex. A class Car



ex. WA class Car

****Include****

Accommodation (6 nights) /6 Breakfast & 1 Diner	Car Renting (6 Days 5
Night / CarInsurance	Tax and Service
Charge	

****Not Include****

S/S Admission Fee / Highway, parking, Gas Fee	Airport
Meeting Assistant on arrival/ 4200JPY per group for option	

****NOTE****

Cars have GPS system (You can hear direction in English)

